

**Investment Information**

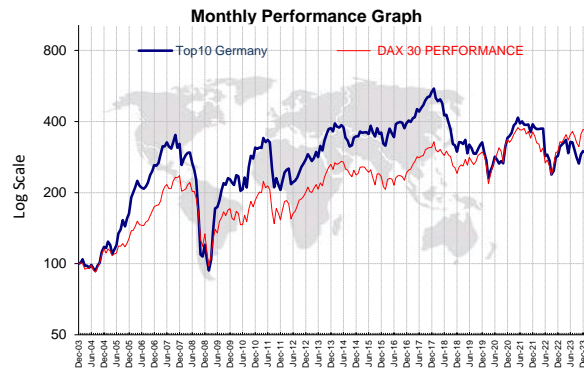
Private Mandate	Germany_02-10_50HRHV_100	Currency	Prof., USD	Investment Type	Private Mandate
Investm. Advisor	Quant Asset Management, Singapore	Liquidity	Daily	Investment Profile	High Risk , High Return
Prime Broker	Interactive Brokers LLC , USA / Local Brokers	Rebalancing	Monthly , 1st day		
Custodian	Interactive Brokers LLC , USA / Local Brokers	Min Investment	1mil USD		

**Strategy : Long Only Equity**

The firm practices a systematic investment style, whereby it uses proprietary models to screen over 6000 active companies worldwide for mostly fundamental investment criteria. The models are based on a company's relative valuation and the relative strength of its earnings momentum versus its peers. A frequently rebalanced selection of a large number of the top percentile stocks according to this ranking mechanism forms the basis of its large long stock portfolios. Additionally, a trend following adaptation methodology that systematically adapts to changing market conditions is applied.

**Commentary**

The MTD performance of the Top10 Germany was +4.80% versus the DAX 30 PERFORMANCE+4.19% on 29 Feb 2024. The equity portfolio consisted of 10 long stocks with an average market capitalisation of 13 billion USD . Each equity position was invested at equal weight of 10.00%. The investment's net exposure was +100.00%. The factor weightings were +53% in earnings momentum and +47% in valuation.



Performance Tracking	QAM	vs Index
Feb-2024 Monthly Return	4.80%	4.19%
Return since Jan 2004	210%	283%
Annualized Return	5.74%	6.85% Rt
Annualized Volatility	27.30%	21.81% $\sigma$
Reward to Risk Ratio	0.21	0.31 Rt/ $\sigma$
Sharpe Ratio [ Rf = 0.16%]	0.20	0.31 (Rt-Rf)/ $\sigma$
Max Drawdown	Feb-09 -73.36%	-58.61% Feb-09
Best Mthly Return	Apr-09 31.77%	18.11% Nov-20
Worst Mthly Return	Oct-08 -33.48%	-22.77% Oct-08

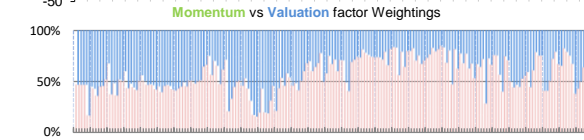
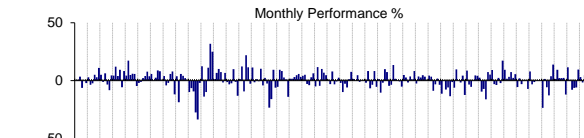
Performance in Statistics		
Tracking Error	13.18%	Info Ratio -8.41%
Correlation to MSCI	87.95%	Beta 110.06%
Ann. Excess Return	-1.11%	Alpha $\alpha$ -1.78%
% Positive Month	57%	% +Year 0%

Investment Exposure	
Long Equities	100%
Short Equities / Future	0%
Net Exposure	100%

Portfolio Holdings - Industry	
Machinery	Insurance
Machinery	Passenger Airli
Automobile Comp	Trading Compani
Machinery	
Automobiles	
Construction Ma	
Commercial Serv	

Annu Return	1 Year	3 Years	5 Years
QAM	-3%	-4.70%	-1.04%
Index	17%	4.56%	7.85%

Factor Weightings	
Momentum	53% ██████████
Value	47% ██████████



Note : Performance numbers are gross before fees Valuation Date : 29-Feb-24

Monthly Return	Jan	Feb	Mar	Apr	May	Jun	Jul	Aug	Sep	Oct	Nov	Dec	Yearly
NAV	296	310											3.24
QAM	-1.49	4.80											3.38
DAX 30 PERFORMA	-0.77	4.19											3.38
QAM	9.45	2.22	2.13	2.31	-12.06	11.53	-0.34	-7.94	-6.30	-5.79	9.60	3.14	4.97
DAX 30 PERFORMA	10.56	-0.82	4.21	3.52	-5.00	5.49	2.93	-4.55	-5.88	-3.90	13.02	4.60	24.53
QAM	-3.24	-1.23	-0.13	0.41	0.02	-23.54	1.57	-5.72	-12.76	3.81	13.82	1.51	-26.57
DAX 30 PERFORMA	-3.99	-6.35	-1.26	-7.27	3.63	-13.29	2.88	-6.13	-8.04	10.37	13.17	0.25	-17.74
QAM	1.64	3.21	7.42	2.35	5.70	-5.56	1.95	-3.06	-0.26	0.33	-7.14	7.91	14.11
DAX 30 PERFORMA	-2.78	2.54	5.41	3.30	3.48	-2.31	0.08	1.41	-5.38	2.65	-6.38	6.28	7.62
QAM	-9.44	-7.19	-16.12	7.41	5.21	9.15	-2.91	-3.65	2.33	-2.07	17.21	9.36	4.50
DAX 30 PERFORMA	-3.27	-9.22	-16.53	9.12	8.34	7.28	5.30	6.33	-3.35	-10.04	18.11	5.58	12.87
QAM	9.83	-0.27	-1.65	4.28	-12.36	8.72	-3.28	-5.25	-0.15	4.63	4.15	2.65	9.58
DAX 30 PERFORMA	6.22	2.28	-1.30	6.89	-5.53	8.05	-3.89	-3.12	3.05	5.94	1.67	1.91	23.22

Yearly Return	2017	2018	2019	2020	2021	2022	2023	2024	2025	2026	2027	2028	2029
QAM	35.53	(44.08)	9.58	4.50	14.11	(26.57)	4.97	3.24					
DAX 30 PERFORMA	28.09	(22.18)	23.22	12.87	7.62	(17.74)	24.53	3.38					
Yearly Return	2004	2005	2006	2007	2008	2009	2010	2011	2012	2013	2014	2015	2016
QAM	17.74	38.19	60.45	23.22	(62.56)	89.06	36.33	(33.95)	34.88	35.40	(7.48)	3.71	9.40
DAX 30 PERFORMA	15.66	10.28	36.36	35.58	(43.31)	27.83	8.52	(17.45)	31.08	31.15	(9.86)	(1.64)	3.76

The information and any disclosures provided herein are considered confidential. Any use, distribution, modification, copying, forwarding or disclosure by any person is strictly prohibited. The performance data provided herein has not been audited. This is neither an offer to sell nor a solicitation of any offer to buy shares in any funds managed by us. Any offering is made only pursuant to the relevant information memorandum, together with the current financial statements of the relevant fund, if available, and the relevant subscription application, all of which must be read in their entirety. No offer to purchase shares will be made or accepted prior to receipt by the offeree of these documents and the completion of all appropriate documentation. The shares have not and will not be registered for sale, and there will be no public offering of the shares. No offer to sell (or solicitation of an offer to buy) will be made in any jurisdiction in which such offer or solicitation would be unlawful. Past performance and/or backtesting results of a fund are no guarantee as to its performance in the future.